

Archivo María Carmona
de piezas de música de su hermano

Piezas para Órgano
Año 2024. 1º trimestre

Año 2024	Meses 1, 2, 3	
Remembranzas	20 1 24	1
Do mayor	11 2 24	10
Limbo	16 2 24	17
Limbo	2 3 24	24
Limbo	16 3 24	31

အိန္ဒိယ

ကောလိယ ကောလိယ ၂၀၁၂

20 1 24 1



ကောလိယကောလိယ

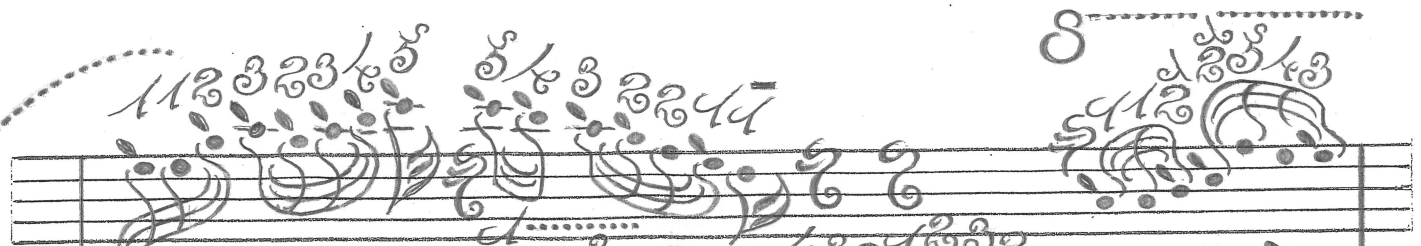
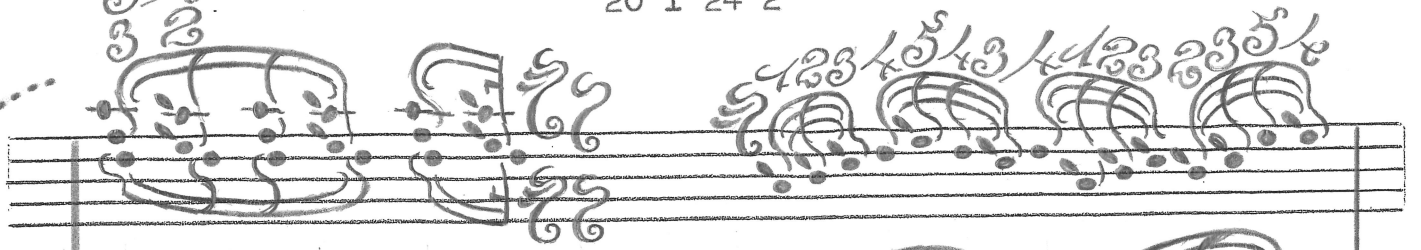
8

8

A

A

20 1 24 2



20

B

B

20 1 24 3

The first system of handwritten musical notation consists of two staves. The top staff begins with a treble clef and contains a series of notes with stems, some of which are grouped with brackets. A large, decorative flourish on the left side of the page extends upwards and around the first staff. The bottom staff contains notes with stems and some rests, with a large bracket underneath. The notation is highly stylized and appears to be a form of musical shorthand or a specific dialect of musical notation.

The second system of handwritten musical notation consists of two staves. The top staff begins with a treble clef and contains a series of notes with stems, some of which are grouped with brackets. A large, decorative flourish on the left side of the page extends upwards and around the first staff. The bottom staff contains notes with stems and some rests, with a large bracket underneath. The notation is highly stylized and appears to be a form of musical shorthand or a specific dialect of musical notation.

The third system of handwritten musical notation consists of two staves. The top staff begins with a treble clef and contains a series of notes with stems, some of which are grouped with brackets. A large, decorative flourish on the left side of the page extends upwards and around the first staff. The bottom staff contains notes with stems and some rests, with a large bracket underneath. The notation is highly stylized and appears to be a form of musical shorthand or a specific dialect of musical notation.

C

20 1 24 4

The first system of handwritten musical notation consists of two staves. The upper staff features a series of complex, overlapping notes and rests, with a treble clef at the beginning. The lower staff contains more distinct notes and rests, with a bass clef. The notation is highly decorative and appears to be a form of musical shorthand or a specific dialect of musical notation.

The second system of handwritten musical notation also consists of two staves. The upper staff continues the complex notation from the first system. The lower staff shows a continuation of the musical ideas, with some notes connected by dotted lines, suggesting a melodic line or a specific rhythmic pattern. The notation remains highly stylized and intricate.

The third system of handwritten musical notation consists of two staves. The upper staff continues the complex notation, with some notes marked with asterisks. The lower staff shows a continuation of the musical ideas, with some notes connected by dotted lines. The notation remains highly stylized and intricate. The system concludes with a large, stylized letter 'D' at the bottom right.

2

20 1 24 5

F

20 1 24 6

Handwritten musical notation on a five-line staff. It begins with a treble clef and a common time signature. The notation consists of several measures of music, featuring a mix of eighth and sixteenth notes, some with beams. There are some decorative flourishes above the notes.

Handwritten musical notation on a five-line staff. It continues from the first staff. The notation is dense, with many notes and some complex rhythmic patterns. There are some decorative elements, including a circular flourish.

Handwritten musical notation on a five-line staff. It continues from the second staff. The notation features a series of notes with stems, some of which are grouped together. There are some decorative elements, including a circular flourish.

Handwritten musical notation on a five-line staff. It continues from the third staff. The notation is very dense and complex, with many notes and stems. There are some decorative elements, including a circular flourish.

Handwritten musical notation on a five-line staff. It continues from the fourth staff. The notation features a series of notes with stems, some of which are grouped together. There are some decorative elements, including a circular flourish.

Handwritten musical notation on a five-line staff. It continues from the fifth staff. The notation is dense and complex, with many notes and stems. There are some decorative elements, including a circular flourish. The piece ends with a double bar line and a fermata.

F

F

20 1 24 7

The first system of handwritten musical notation consists of two staves. The top staff begins with a large 'S' symbol and contains a series of rhythmic patterns, possibly representing a specific scale or sequence of notes. The bottom staff continues with similar patterns, including some notes with stems and beams. The notation is dense and intricate, characteristic of traditional Indian musical notation.

The second system of handwritten musical notation also consists of two staves. It begins with a large 'S' symbol. The notation is highly detailed, with many notes and stems, suggesting a complex rhythmic structure. The bottom staff ends with the word 'RE' written in a stylized font.

The third system of handwritten musical notation consists of two staves. It begins with a large 'S' symbol. The notation is very dense and complex, with many notes and stems. The bottom staff ends with the word 'G' written in a stylized font.

G

UN H

H

20 1 24 9

The first system of handwritten musical notation consists of two staves. The upper staff is written in treble clef and contains a highly ornamented melodic line with numerous grace notes and slurs. The lower staff is written in bass clef and contains a rhythmic accompaniment with various note values and rests. Below the bass staff, there are several lines of rhythmic notation, including dotted lines and vertical strokes, with some numbers (1, 2, 3, 4) indicating specific rhythmic patterns.

The second system of handwritten musical notation continues the piece. It features two staves, with the upper staff maintaining the ornate melodic line and the lower staff providing the rhythmic accompaniment. The notation is dense and intricate, with many slurs and ornaments. Below the staves, there are additional rhythmic markings and some numbers (1, 2, 3, 4) indicating the timing of the notes.

The third system of handwritten musical notation concludes the piece. It consists of two staves. The upper staff features a final melodic flourish with a double bar line at the end. The lower staff continues the rhythmic accompaniment. Below the staves, there are final rhythmic markings and numbers (1, 2, 3, 4) indicating the timing of the notes.